



# DEFENCE ADHESIVE REMOVABLE

## RECOMMENDATIONS FOR INSTALLATION



## BEFORE STARTING - REMOVABILITY TEST



Before gluing, thoroughly clean the surface, which must be smooth, cohesive and free from irregularities. Any surface damage must be assessed and properly treated before laying the membrane.



Apply DEFENCE ADHESIVE REMOVABLE, taking care to avoid the formation of air bubbles and creases.



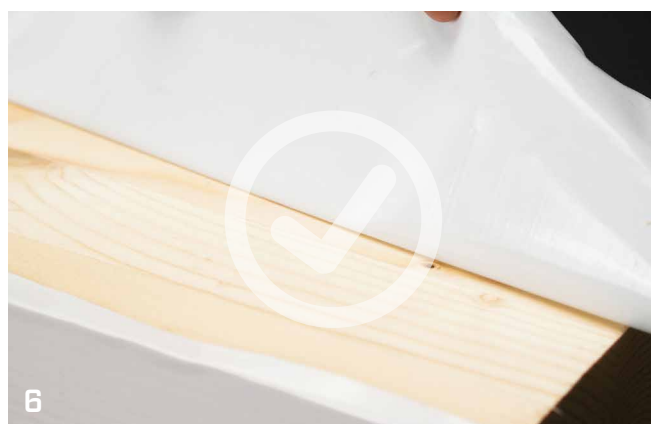
**IMPORTANT:** the product cannot be repositioned on timber. It should not be removed and reapplied, as its adhesive strength would be compromised.



It is recommended to wait 48 hours to ensure the membrane reaches full adhesion.



Remove DEFENCE ADHESIVE REMOVABLE.



Check that no parts of the substrate have been removed.

## ■ APPLICATION ON PANELS



Before gluing, thoroughly clean the substrate, removing any dust, residue and surface impurities that could compromise the membrane's adhesion.

The surface must be smooth, cohesive and free from irregularities. Any surface damage must be assessed and properly treated before laying the membrane.

❌ **unsuitable** surface!

✅ **suitable** surface!



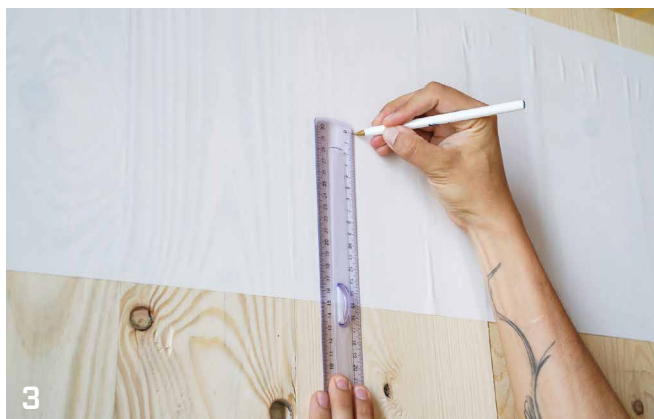
To improve adhesion, it is advisable to first apply a strip of DEFAREM360 to facilitate laying and increase adhesion.

### IMPORTANT:

The formation of wrinkles should be avoided.

It is advisable not to remove and reposition the product, as its adhesive strength would be compromised.





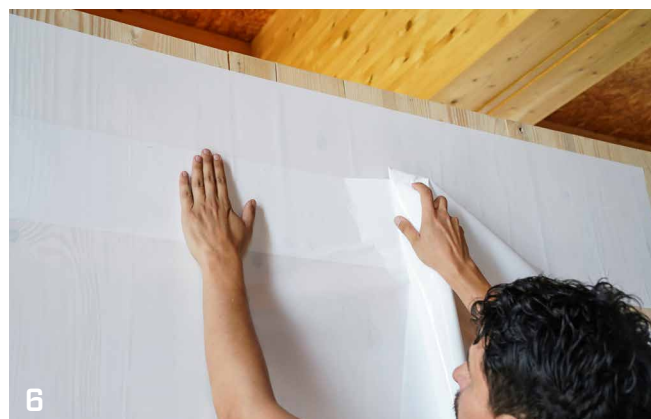
Before applying DEFENCE ADHESIVE REMOVABLE, ensure an overlap of 10–15 cm starting from the base of DEFAREM360.



Apply DEFENCE ADHESIVE REMOVABLE, ensuring the product is evenly laid. It is important to avoid the formation of wrinkles or air bubbles. The product cannot be repositioned on timber: avoid removal and subsequent reapplication.



Remove DEFENCE ADHESIVE REMOVABLE. Within 8 weeks if exposed directly to weathering and UV rays.



For optimal performance, the membrane should not be directly exposed to weathering and UV rays for more than 8 weeks. If the membrane is adequately protected, the removability of DEFENCE ADHESIVE REMOVABLE can be extended for up to a further 4 weeks.



## ■ APPLICATION ON BEAMS OR POSTS



Before gluing, thoroughly clean the surface, which must be smooth, cohesive and free from irregularities. Any surface damage must be assessed and properly treated before laying the membrane.



Accurately position the membrane on the surface, ensuring proper alignment and full coverage of the area to be treated before gluing.



Apply DEFENCE ADHESIVE REMOVABLE, taking care to avoid the formation of air bubbles and creases.



**IMPORTANT:** the product cannot be repositioned on timber. It should not be removed and reapplied, as its adhesive strength would be compromised.



If the overlap occurs at a corner fold, it should preferably rest on membrane already applied rather than directly on the timber, to ensure better sealing and continuity of the protective system.



DEFENCE REMOVABLE should also be applied to the beam's end grain, particularly during transport, to protect the timber from accidental damage.



This precaution helps preserve the material's integrity until installation.



Remove DEFENCE ADHESIVE REMOVABLE. Within 8 weeks if exposed directly to weathering and UV rays.



For optimal performance, the membrane should not be directly exposed to weathering and UV rays for more than 8 weeks.  
If the membrane is adequately protected, the removability of DEFENCE ADHESIVE REMOVABLE can be extended for up to a further 4 weeks.

## ROTHO BLAAS SRL

Via dell'Adige N.2/1 | 39040, Cortaccia (BZ) | Italia  
Tel: +39 0471 81 84 00 | Fax: +39 0471 81 84 84  
info@rothoblaas.com | www.rothoblaas.com

